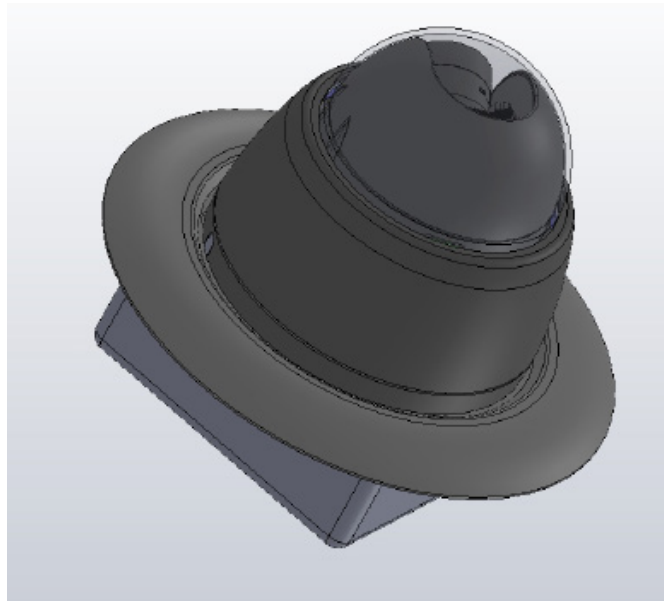
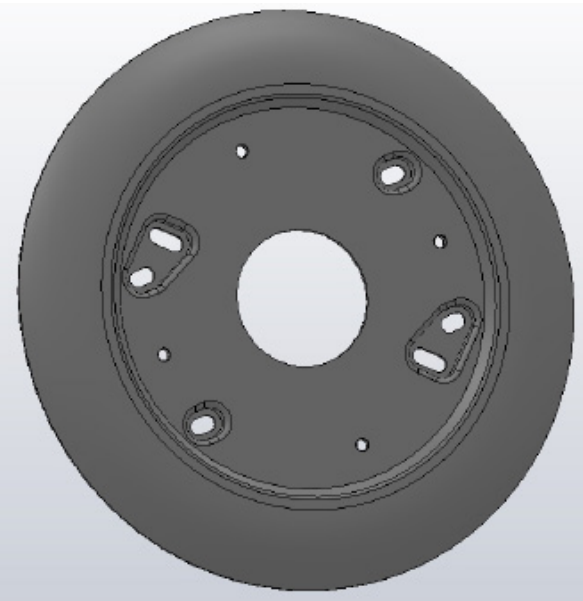


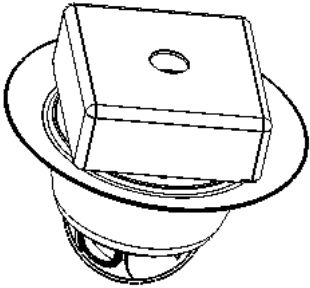
inCA514SMP

Electrical Box Adapter Plate



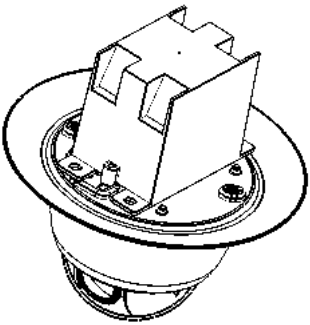
The Remote Alert inCA514SMP Electrical Box Adapter Plate is used to mount the in51 Series domes on a variety of electrical boxes. Mounts to a 4-Square, Double Gang, Single Gang, Octagon or Round box.

- Metal Construction
- Dome Covers Mounting holes
- Fits Multiple Box Types

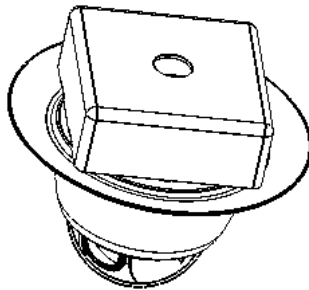


4 Square

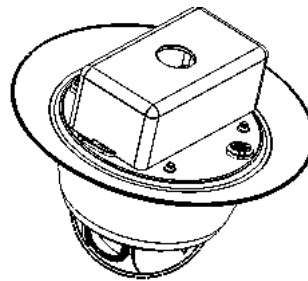
Physical	Diameter	168.5mm
	Weight	220g
Order Codes	White	inCA514SMP
	Black	inCA514SMPB



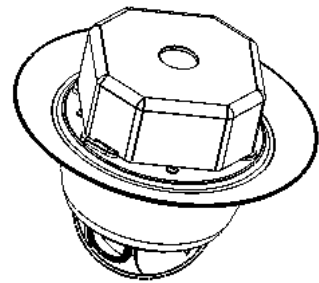
Old Work Box



Double Gang



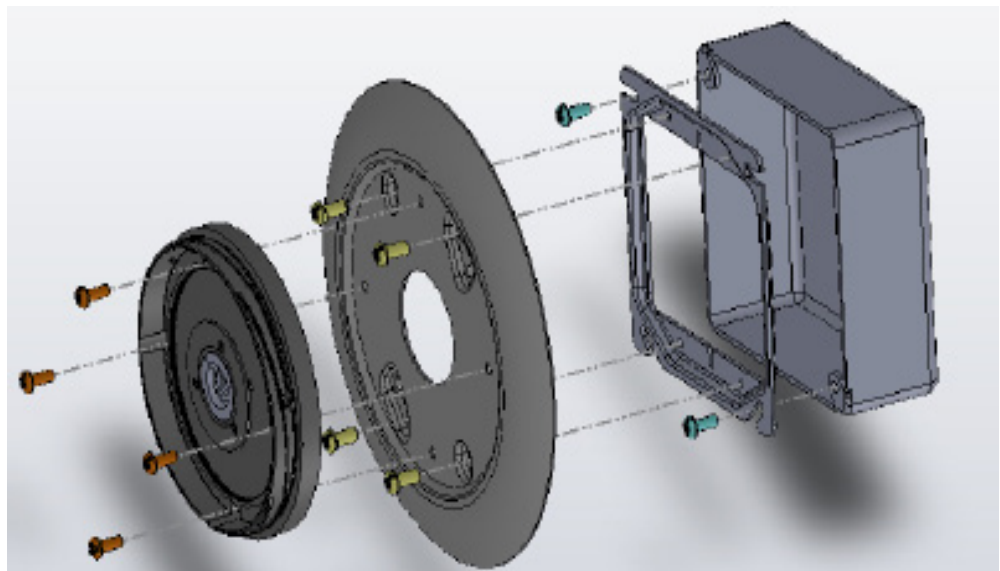
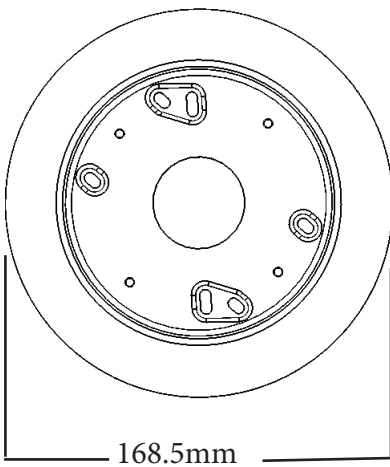
Single Gang



Octagon

Mounting to a 4 Square Box

Dimension



Remote Alert reserves the right to amend specifications and design without prior notice